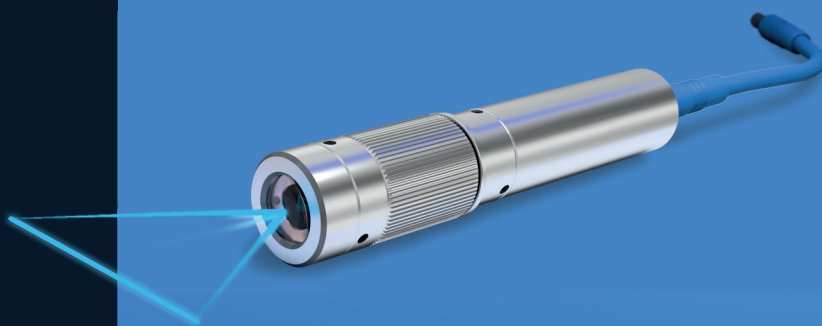




# Line Laser Modules for Machine Vision and Laser Triangulation

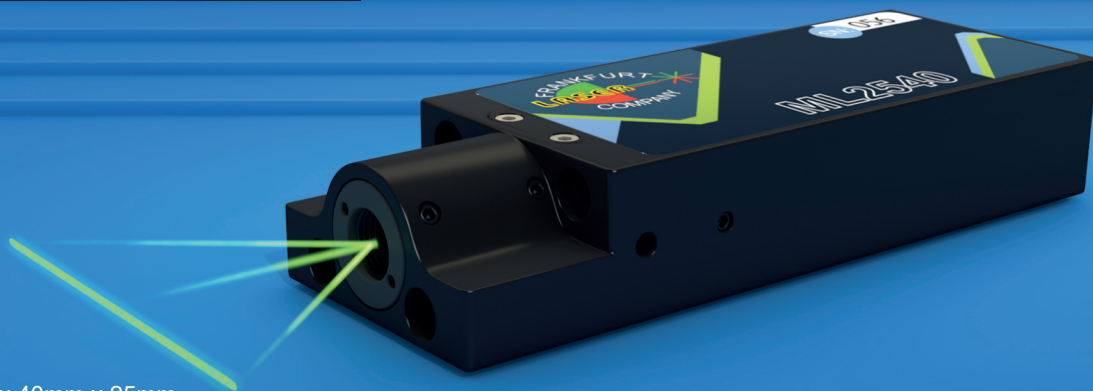
## HAML-F

Uniform Line Laser Diode Module  
Wavelength: 405nm – 1060nm  
Output power: 100mW – 200mW  
Line uniformity: up to +/- 10%  
Industrial protection: IP67  
Easy manual focus adjustment



## ML2540

High Power Line Laser Modules  
Wavelength: 405nm – 1060nm  
Output power: 0.5W – 2.0W  
Temperature stabilized  
Industrial protection: IP67  
Market smallest footprint: 130mm x 40mm x 25mm



## HSML-E

Ultra-thin Uniform Line Laser Diode Module  
Wavelength: 405nm – 1060nm  
Output power: up to 50mW  
Line width: 10  $\mu$ m  
Line uniformity: up to +/- 10%  
Industrial protection: IP67  
Separate electronic driver to use in limited space devices



See technical details on  
[frlaserco.com](http://frlaserco.com)

See us at

Hall 10  
Booth 10E90  
Oct 05 – 07, 2021  
Stuttgart, Germany

